

DustCheckup™ Instructions

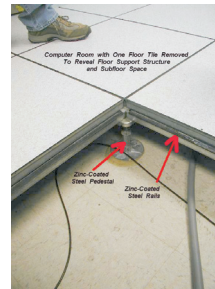
For collecting samples use ANY clear* 48-50mm packaging tape such as:

- 3M Scotch Transparent Packaging tape
- Duck HDClear
- Tesa tesapack CRYSTAL CLEAR packing tape
- Others

* If you cannot see the core of the tape roll it is not transparent.



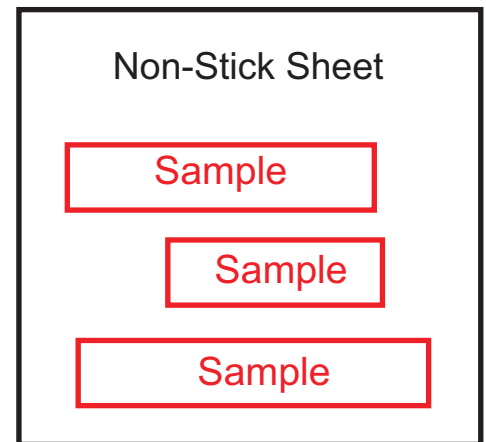
Cut a piece of tape about 10-12cm (4-5 inches) in length and stick the tape to a surface to be tested and then carefully remove. After removing do not reapply tape. Tape samples may be taken from hard and carpeted floor surfaces, external and internal equipment surfaces as well as structural surfaces.



Stick one or more tape lift samples to a non-stick sheet such as the following:

- Clear plastic sheet from a zip loc bag.
- Wax paper used in baking.
- Silicon backing paper where the labels have been removed.

As shown in the image one or more tape lift samples can be applied to the non-stick sheet. Depending on the test our lab technicians will analyse one or more of the tape lift samples and generate one report which is representative of the sample. If samples are taken from different locations we recommend separate submissions.



IMPORTANT: Download and print out the "Submission Form".

Seal the sample in a sealable plastic bag (eg ziploc bag) and send together with the "Dust Sample Submission" form to our laboratory using the mailing label on the submission form.

